

Holland Marsh District Christian School

Bathurst Street, Newmarket, ON

October 17, 2012

Project No.
BATHURST & GRAHAM SIDEROAD PLAN

Client:
HOLLAND MARSH DISTRICT CHRISTIAN SCHOOL

TOWNSHIP OF KIM COCHRAN

O.C.A. Architects Inc.

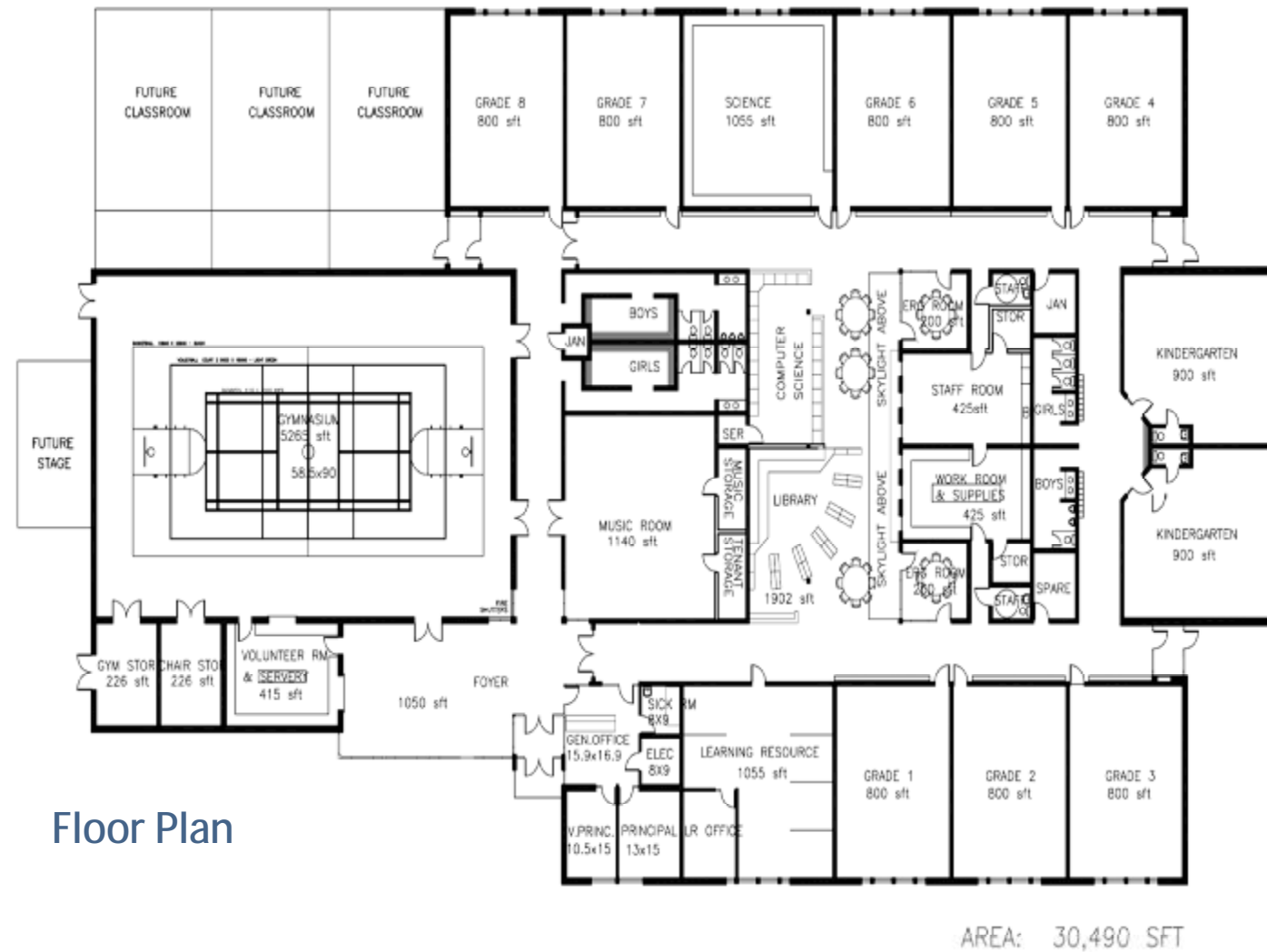
Scale: 1:800

Sheet No.: **A-02**

Date: **JUNE 18, 2012**



Frequently Asked Questions: Building Committee



Floor Plan



Interior Snapshot

View looking towards the library.

How was the gym size determined?

There has been much debate on the size of the gym for the new school. The larger the gym the better community space we will have; however, if the total size of the school is constrained, every additional square foot added to the gym means removing square feet from somewhere else. The size of the gym for the current school is 4,000 square feet. One design we looked at had a gym size of 4,300 square feet and another had 6,700 square feet, similar to the gym at Timothy Christian School in Barrie. In the end we tried to maximize the community space without sacrificing educational space and ended up with a gym of 5,200 square feet.

Will the new school have a bigger kitchen?

We definitely need a larger kitchen than what we have at the existing school, so we designed a kitchen of 415 square feet, which should adequately meet our needs. To put this in perspective, the kitchen at the Springdale Christian Reformed Church, where we've served graduation dinners for years, is only slightly larger at 460 square feet.

Have you thought about the size of the foyer?

We had some designs with much larger foyers. In order to keep the total school size close to 30,000 square feet we designed the foyer to be 1,050 square feet. We believe that this will still be large enough for community gathering space. Along with features designed to contribute to a feeling of openness, the foyer is also strategically located connecting the entrance of the school to the kitchen, gym, music room, and school offices.

Will there be air conditioning in the new school?

Air conditioning is not included; however, the HVAC system will be designed so that A/C coils can be added at a later date. The need for air conditioning is reduced through:

- the shape of the building that minimizes the building envelope in relation to the square footage created
- the elimination of south windows
- maximizing roof and wall insulation (walls R25 and roof R40)
- using natural ventilation for a chimney effect by opening the windows in the classrooms and opening the clear story windows so that the heat rises and exhausts through the clear story windows, drawing fresh air in through the classrooms

Why are clear story windows a good design and construction feature?

Clear story provides light into the centre of the school, there will be no heat build-up as they face north, and they can be opened for natural ventilation.

Why have you decided against using a peaked roof for the new school?

Construction and heating equipment costs increase with a peaked roof design. Peaked roofs have more problems in sound transmission, they are combustible, and are not suitable for solar panels.

Will all the classrooms be a uniform size?

Each classroom will be 800 square feet, which is slightly larger than the 750 square feet being used in current school building designs. The kindergarten rooms are 900 square feet, the science room is 1055 square feet, the Learning Resource room is 1055 square feet, and the music room is 1140 square feet.

How will expropriation of land for the Bathurst Street widening affect the building project?

York Region expropriated 1.1 acres of land from the new school property for the road widening of Bathurst Street and the school will receive \$100,000 in return for this land. With almost 14 acres remaining there is more than enough land for an elementary school.